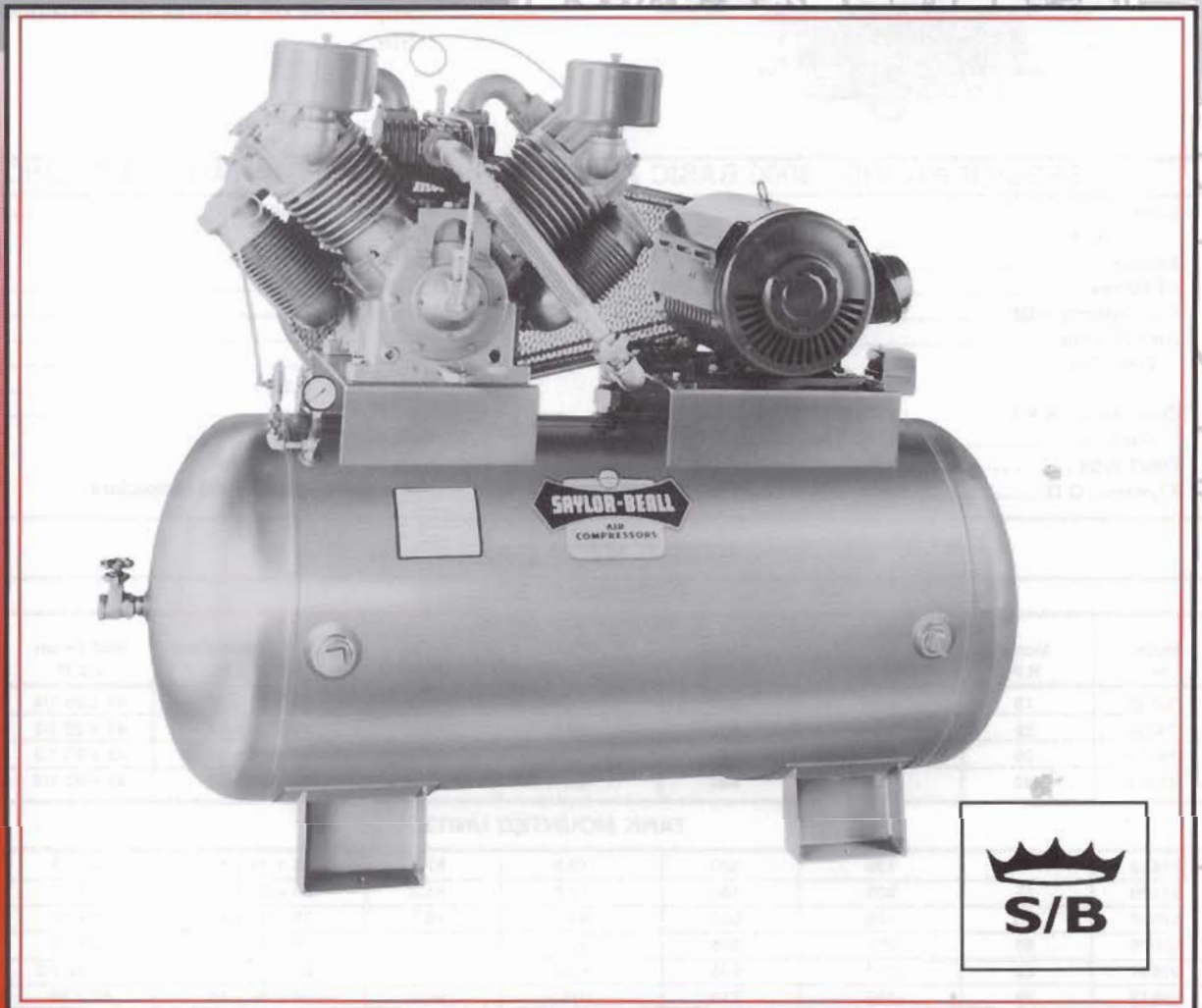


# SAYLOR-BEALL

**INDUSTRIAL  
9000 SERIES AIR COMPRESSORS**

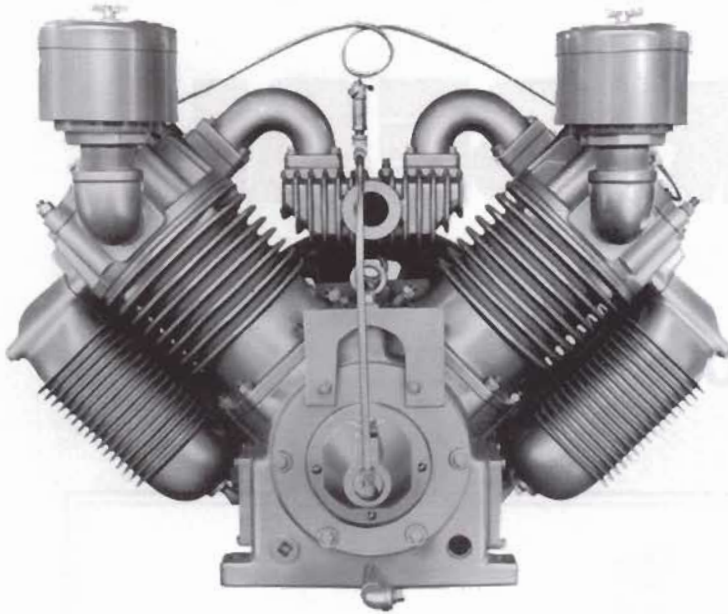


**Saylor-Beall Manufacturing Company**

P.O. Box 40, 400 N. Kibbee St., St. Johns, MI 48879  
1-800-248-9001 (USA) 989-224-2371 (MICH) 989-224-8788 (FAX)

*Manufacturers of Air Compressors since 1915*

# THE POWERPRESSOR



## FEATURES

- **IMPROVED HEAD DESIGN**  
Large direct air passages for greater cooling and reducing pressure drop resulting in higher efficiency.
- **VALVES**  
Large diameter, quick acting for high efficiency.
- **IMPROVED INTERCOOLERS**  
Large capacity, deep finned cast aluminum.
- **PISTON RING DESIGN**  
Improves oil control and extends compressor life.

## SPECIFICATIONS – 9000 BASIC AIR COMPRESSOR – TWO STAGE – 4 CYLINDER

Bore - L.P. ....	6 1/8" (2)
H.P. ....	3 1/4" (2)
Stroke .....	4 1/2"
CFM/Rev. ....	15346
Oil Capacity – Qt. ....	4
Air Filter No. – .....	2
Type Dry	
Openings – N.P.T.	
Suction .....	2" (2)
Discharge .....	1 1/4"
Flywheel O.D. ....	20"

V-Belts – No. and Section .....	4-B
Basic Compressor	
Weight– Dry, Lbs. ....	678
Length .....	26 1/2"
Width .....	37 1/2"
Height .....	24 1/2"
Max. Press. (P.S.I.) .....	175
Max. R.P.M. ....	850
Optional Equipment	
Oil Bath Air Cleaners	
Constant Speed Head Unloaders	

## START-STOP OPERATION

### BASE MOUNTED UNITS

Model No.	Motor H.P.	Tank Cap. (Gals.)	175 P.S.I. SPECIFICATIONS			Overall Dimensions L x W x H	Bolt Down L x W	Net Wt. Lbs. (Approx.)
			Pump R.P.M.	C.F.M. Displ.	C.F.M. Del'y.			
B9150	15	--	480	73.9	61.2	59 x 28 x 32	42 x 20 1/4	1059
B9200	20	--	605	92.8	76.1	59 x 28 x 32	42 x 20 1/2	1101
B9250	25	--	710	109.0	90.0	59 x 28 x 32	42 x 20 1/2	1115
B9300	30	--	830	127.4	101.9	59 x 28 x 32	42 x 20 1/4	1136

### TANK MOUNTED UNITS

91512	15	120	480	73.9	61.2	75 x 29 x 56	40 x 19	1359
91520	15	200	480	73.9	61.2	78 x 29 x 56	40 x 19	1601
92012	20	120	605	92.8	76.1	75 x 29 x 56	40 x 19	1404
92020	20	200	605	92.8	76.1	78 x 30 x 63	40 x 19	1643
92024	20	240	605	92.8	76.1	85 x 30 x 63	51 x 22 1/2	1858
92512	25	120	710	109.0	90.0	75 x 29 x 56	40 x 19	1418
92520	25	200	710	109.0	90.0	78 x 30 x 63	40 x 19	1657
92524	25	200	710	109.0	90.0	85 x 30 x 63	51 x 22 1/2	1872
93012	30	120	830	127.4	101.9	75 x 29 x 56	40 x 19	1439
93020	30	200	830	127.4	101.9	78 x 30 x 63	40 x 19	1678
93024	30	240	830	127.4	101.9	85 x 30 x 63	51 x 22 1/2	1893

## WARRANTY

SAYLOR-BEALL Manufacturing Company warrants its compressors and parts when properly installed, lubricated and maintained as recommended and in accordance with good industry practice to be free from defects in material and workmanship under normal use and service. The responsibility of the Company under this warranty is limited to repair or replacement at the Company's factory, any compressor or part thereof, which shall, within one year after date of shipment to the original purchaser, be returned to the company and which, upon examination, shall be found to be defective to the satisfaction of the Company. This warranty shall not apply to compressors or parts which have been subjected to misapplication, misuse, negligence or accident, to compressors or parts which have been repaired or tampered with outside the Company's factory when in the judgement of the Company, it appears that the reliability or stability of the compressor or part has been affected. Ordinary maintenance, such as adjustment and cleaning of equipment or components is the responsibility of the owner. All transportation and shipping charges shall be paid by purchaser. This warranty does not apply to electric motors or gasoline engines. These are covered by the Original Manufacturer's Warranty and should be returned by the purchaser to their authorized station for service. This warranty is expressly in lieu of all other warranties (except of title) expressed or implied and of any other obligations or liability on the part of the Company. There are no warranties of merchantability or of fitness for a particular purpose.

SAYLOR-BEALL MANUFACTURING COMPANY