

## 100S-...M, 100S-...AF

### DOUBLE OPEN ENDED SPANNER SET

- ▶ carton boxed packed
- ▶ matt chrome plated, heads ground
- ▶ ELORA-Chrome-Vanadium 31CrV3 / 1.2208
- ▶ according to DIN 3110, ISO 3318, ISO 1085, ISO 10102



Code	Number	Contents	Pieces	Weight/g
0100500601000	100S 6M	100- 8x9, 10x11, 12x13, 14x15, 16x17, 18x19 mm	1	615
0100500801000	100S 8M	100- 6x7, 8x9, 10x11, 12x13, 14x15, 16x17, 18x19, 20x22 mm	1	820
0100500821000	100S 8DIN	100- 6x7, 8x9, 10x11, 12x13, 14x15, 16x17, 18x19, 21x22 mm	1	890
0100501001000	100S 10M	100- 6x7, 8x9, 10x11, 12x13, 14x15, 16x17, 18x19, 20x22, 21x23, 24x27 mm	1	1520
0100501021002	100S 10DIN-1	100- 6x7, 8x9, 10x11, 12x13, 14x15, 16x17, 18x19, 21x22, 24x26, 27x32 mm	1	1617
0100501011000	100S 101M	100- 6x7, 8x9, 10x11, 12x13, 14x15, 16x17, 18x19, 20x22, 24x27, 30x32 mm	1	1715
0100501031000	100S 101DIN	100- 6x7, 8x9, 10x11, 12x13, 14x15, 16x17, 18x19, 21x22, 24x26, 30x34 mm	1	1800
0100501201000	100S 12M	100- 6x7, 8x9, 10x11, 12x13, 14x15, 16x17, 18x19, 20x22, 21x23, 24x27, 25x28, 30x32 mm	1	2280
0100501221000	100S 12DIN	100- 6x7, 8x9, 10x11, 12x13, 14x15, 16x17, 18x19, 20x22, 21x23, 24x26, 27x32 30x34 mm	1	2610

Code	Number	Contents	Pieces	Weight/g
0100600601000	100S 6AF	100A- 5/16x3/8, 7/16x1/2, 9/16x5/8, 11/16x3/4, 13/16x7/8, 15/16x1 AF	1	980
0100600801000	100S 8AF	100A- 1/4x5/16, 5/16x3/8, 7/16x1/2, 9/16x5/8, 11/16x3/4, 13/16x7/8, 15/16x1, 1.1/16x1.1/4 AF	1	1420
0100601201000	100S 12AF	100A- 1/4x5/16, 5/16x3/8, 3/8x7/16, 7/16x1/2, 1/2x9/16, 9/16x5/8, 5/8x11/16, 3/4x25/32, 13/16x7/8, 15/16x1, 1x1.1/8, 1.1/16x1.1/4 AF	1	2060

## 100-KH 9

### DOUBLE OPEN ENDED SPANNER SET

- ▶ in black plastic holder
- ▶ matt chrome plated, heads ground
- ▶ ELORA-Chrome-Vanadium 31CrV3 / 1.2208
- ▶ according to DIN 3110, ISO 3318, ISO 1085, ISO 10102

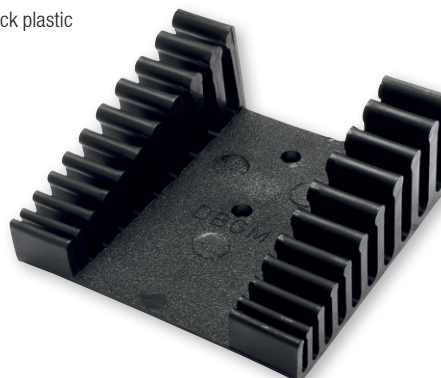


Code	Number	Contents	Pieces	Weight/g
0100500902000	100-KH 9	100- 6x7, 8x9, 10x11, 12x13, 14x15, 16x17, 18x19, 20x22, 21x23 mm	1	1270

## 100SH

### HOLDER FOR DOUBLE OPEN ENDED SPANNER SET

- ▶ for double open-ended spanner sets of 8, 10 and 12 pcs. ELORA-No.100, for fitting on tool boards and in tool cabinets
- ▶ solid black plastic



Code	Number	suitable for	Pieces	Weight/g
0100500857000	100S H 8	ELORA-Nr.100S 8M, 100S 8DIN, 100S 8AF	1	19
0100501057000	100S H 10	ELORA-Nr.100S 10M	1	26
0100501257000	100S H 12	ELORA-Nr.100S 12M, 100S 12AF	1	38